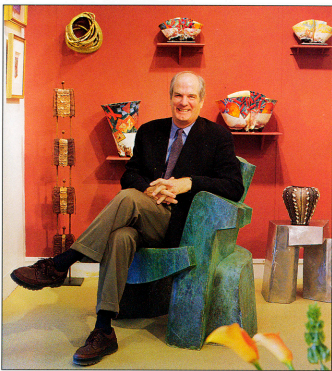


AD *at* LARGE

GUND'S COLORFUL CAMBRIDGE

It's sort of an unusual American craft museum," **Graham Gund** says of **Mobilia Gallery** in Cambridge, Massachusetts. "They carry decorative arts and fabulous furniture." Gund (right, with Jim Cole's patinated aluminum chair and stainless-steel end table) has long been a fan of the gallery, which opened in 1978 and is run by sisters Libby and Joanne Cooper.

"Our parents used to collect art, so they've always encouraged us," says Libby Cooper. "We like to showcase both established and emerging artists. And we love color—some galleries can be so monochromatic." Many of the pieces at Mobilia fall into the categories of ceramics, studio furniture, jewelry and metalwork. New collections are presented every six weeks, and in March the gallery



PHOTOGRAPH BY BRIAN ANDERSON/DPMA

is having its first glass exhibition. "We don't usually show glass, because it's a different sensibility," says Libby Cooper. "But we select artists who do things that appeal to us. And that's part of the fun—controlling the space and making it do a variety of things that excite us. It's an evolving aesthetic. What attracts us most is innovative techniques and materials, and an attention to detail. Many of the artists that we work with spend months on their pieces." Among the items the gallery shows are pit-fired earthenware bowls by Bennett Bean, a sterling silver tea set by Christina Smith, a Jim Cole aluminum bench with a baked-enamel finish and a chair by Boris Bally made of recycled street signs (below). Mobilia Gallery, 358 Huron Ave., Cambridge, MA 02138; 617/876-2109.



Mobilia Gallery's pit-fired earthenware bowl by Bennett Bean, above

Below, a Christina Smith silver tea set that Graham Gund bought



continued on page 36